



THE ARKANSAS CHAPTER OF THE AMERICAN INSTITUTE OF ARCHITECTS

A supplement to *Arkansas Business* • Vol. 35, No. 43, October 22, 2018



2018  
DESIGN AWARDS



## FROM THE PRESIDENT

I am honored to present the 2018 AIA Arkansas Design Awards. The design award program is our way of showcasing the outstanding design talent and diligent work ethic that exemplifies the design community found in Arkansas.

This year, 51 entries were submitted to an independent panel of judges from Nashville, Tennessee. The individual jury members were selected for their diverse design backgrounds and sensibilities. The judges were Ryan Thewes of Ryan Thewes Architect, Nick Dryden of Dryden Architecture and Design, Kem Hinton of Tuck-Hinton and Sheila Dial of EOA. Of the 51 entries, four were selected as finalists, while 12 were selected as award winners. The ranked submissions can be found throughout this publication.

In addition to the jury-selected recipients, AIA Arkansas honors two other recipients through the Members' Choice Award and the People's Choice Award. The People's Choice Award is an award that allows the public to view all entries and choose their favorite project. Both awards are chosen by popular vote.

The cover of this year's publication highlights the 2017 Members' Choice

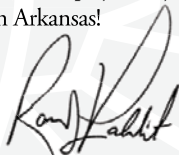
Award winner, the Windgate Art & Design Building designed by WER Architects/Planners.

The Fay Jones Gold Medal Award is the highest award AIA Arkansas can bestow upon one of its members. The award recognizes an individual architect who has demonstrated touchstones of excellence through artistic vision and design, leadership and service to the state of Arkansas and the AIA Arkansas Chapter. Excellence is measured not only by the mark of architectural and individual achievement, but through the esteem and regard held for the architect by professional practitioners and the community as a whole. This year's recipient is Joe Stanley, AIA, of Polk Stanley Wilcox Architects. Throughout PSW's 40-year history, Joe has inspired many architects who went on to be principals in their own offices, and he remains a trusted source of counsel to those and other young practitioners throughout the state as they build their firms. Joe, more than anyone, embodies the attitude of spirited but cooperative competition.

The Dick Savage Memorial Award is AIA Arkansas' recognition of a member who has made notable, significant contributions to the chapter and the profession. This year's award goes to Thad Kelly, FAIA. For over 16 years he's made significant contributions to both the AIA Arkansas Chapter and the profession. Thad has held AIA positions at the section, state, regional and national levels.

The Emerging Professional Award is intended to recognize a professional, practicing for 10 years or less, who has expanded the role of the architect through civic participation and professional mentorship. This year's recipient is Lori Yazwinski Santa-Rita, AIA, LEED AP. Licensed in 2011, Lori has built her career at what was formerly known as Maurice Jennings Architects, now known as Jennings+Santa-Rita Architects, after working her way up to partner in 2015. Lori's leadership and service to our profession is broad and engaged. Respected by her colleagues and peers, she has committed her personal and professional time, energy and passion to bettering our state and advocating for our profession.

We hope you enjoy this publication and its celebration of architecture in Arkansas!



Cordially,  
Randy Palculict, AIA, LEED BD+C  
President, AIA Arkansas

## TABLE OF CONTENTS

### 2 From the President

A letter from AIA Arkansas President Randy Palculict, AIA



### 3 Honor Awards

### 4 Fay Jones Gold Medal Winner



### 5 People's Choice Award

### 5 Merit Awards

### 7 Citation Award



### 8 Finalists

### 9 Dick Savage Award

### 9 Remaining Projects

### 14 Emerging Professional | Award of Merit

### 14 Design Awards Chair

### 15 Judges



## ON THE COVER

The cover of this year's publication highlights the winner of the 2017 Members' Choice Award, the Windgate Art & Design Building at the University of Arkansas at Fort Smith. AIA Arkansas attendees at last year's convention selected this design by WER Architects/Planners. Photo by Dero Sanford





## HONOR AWARDS



**PROJECT:** ROBINSON CENTER RENOVATION & EXPANSION

**FIRM:** POLK STANLEY WILCOX ARCHITECTS

**CONTRACTOR:** CDI / HUNT JOINT VENTURE

**LOCATION:** LITTLE ROCK

The complete renovation and expansion of the Robinson Center dramatically reimagines the beloved historic landmark as a state-of-the-art performance and conference venue, poised for the future.

Originally completed in 1939 as part of the WPA New Deal campaign, the building's exterior and historic lobby have been restored and the essential character of the landmark building enhanced. Beyond the historic lobby, modern interventions provide a dramatic reinterpretation of the original art deco elements.

Inside the house, the auditorium's original design was a long, low rectangular box and far from acoustically ideal. The decision to drop the new performance hall stage 36 feet into the former exhibit hall space below dramatically increases the hall's acoustic volume.

Features such as a sculptural ceiling, forward-leaning faceted interior wall panels and wood balconies further enhance the acoustic and visual environment.

**OWNER/CLIENT:** LITTLE ROCK CONVENTION & VISITORS BUREAU

**PROJECT TEAM:** DAVID PORTER, AIA; CINDY PRUITT, AIA; WESLEY WALLS, AIA; WENDELL KINZLER, AIA; DIAN BARTLETT, ASSOC. AIA; LAURA HENDRIX; HEATHER DAVIS, AIA; DAVID ROGERS, AIA

**CONSULTANTS:** MCCLELLAND CONSULTING ENGINEERS INC., BERNHARD TME, ENGINEERING CONSULTANTS INC., LANDSCAPE ARCHITECTURE INC., JAFFE HOLDEN, SCHULER SHOOK INC.

**PHOTOGRAPHER:** TIMOTHY HURSLEY



**PROJECT:** SHELBY FARMS PARK

**FIRM:** MARLON BLACKWELL ARCHITECTS

**CONTRACTOR:** MONTGOMERY MARTIN CONTRACTORS

**LOCATION:** MEMPHIS

Shelby Farms Park, one of the largest urban parks in the country, has implemented a master plan, developed by James Corner Field Operations (JCFO), to revitalize the park into a unique, 21st century landmark. An ensemble of buildings and structures located around the 80-acre Hyde Lake are imaged as the "Heart of the Park."

The buildings at Shelby Farms seek to live between a balance of the local and the universal, introducing one to another and honoring the value of both. This has long been a role for Memphis, offering a collection of its local culture to the world at large. Now Shelby Farms Park offers the opportunity for these tides - the outflow of the local and the inflow of the universal - to wash across a common landscape. Intensely specific in their function and articulation, but universal in their abstract figuration, each member of this family of silhouettes attempts to recreate strangeness, offering a familiarity that is somehow elusive.

**OWNER/CLIENT:** SHELBY FARMS PARK CONSERVANCY

**PROJECT TEAM:** MARLON BLACKWELL, FAIA; MERYATI JOHARI BLACKWELL, AIA; JONATHAN BOELKINS, AIA; DAVID JAEHNING, AIA; KERTIS WEATHERBY, AIA; WILLIAM BURKS, ASSOC. AIA; STEPHEN REYENGA, ASSOC. AIA; JUSTIN HERSHBERGER, AIA; BRADFORD PAYNE, ASSOC. AIA; STEPHEN KESEL, ASSOC. AIA; SPENCER CURTIS, ASSOC. AIA

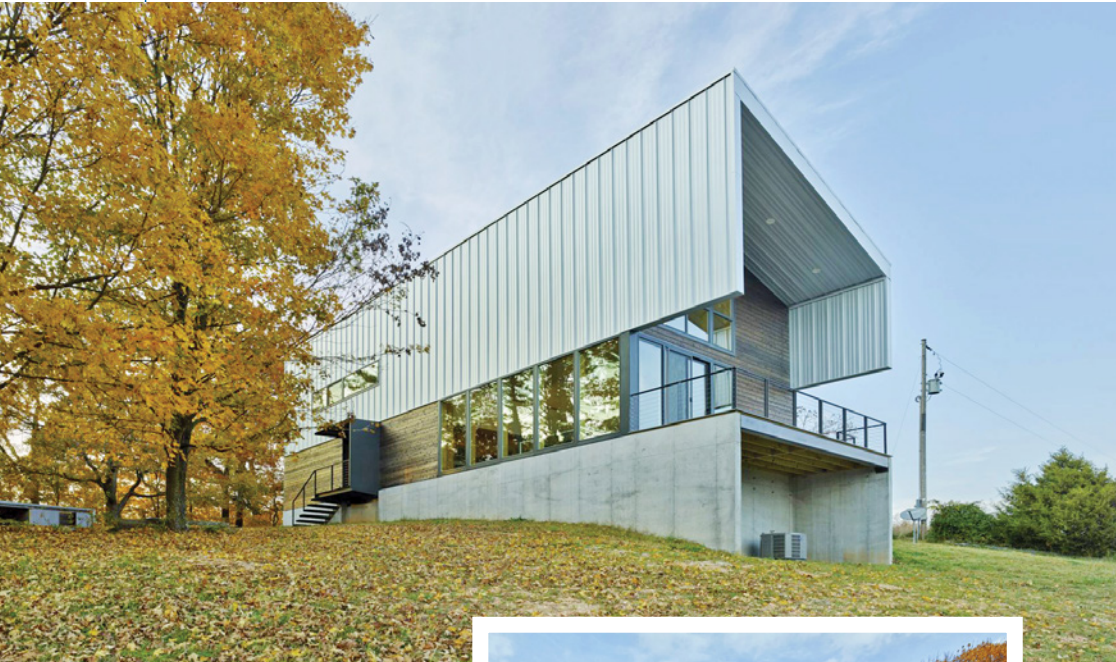
**CONSULTANTS:** JAMES CORNER FIELD OPERATIONS, HALTOM ENGINEERING, CANUP ENGINEERING, PICKERING FIRM INC., GUY NORDENSON & ASSOCIATES, ENGINEERING CONSULTANTS INC.

**PHOTOGRAPHER:** TIMOTHY HURSLEY





## HONOR AWARDS



**PROJECT:** THE SUTCLIFFE HOUSE

**FIRM:** DEMX ARCHITECTURE

**CONTRACTOR:** CHRIS CRIDER CONSTRUCTION

**LOCATION:** EUREKA SPRINGS

Designed for a local landscape photographer and inspired by the economy of regional vernacular forms, this secluded Ozark mountain residence captures and emphasizes views of the surrounding landscape.

To focus these views, the shell of the house projects eastward, framing the Ozarks, capturing the historic Crescent Hotel in the distance, and allowing ample amount of light to filter into the space.

The plan reinforces the transparency and encourages social interaction and fluidity throughout the entire residence. The barrier between exterior and interior diminishes within the residence as the covered balcony acts as a transitional space between the main living space and the natural landscape.

The materiality and form bring the project back to the vernacular by analyzing and taking from regional gambrel barns. The residence is clad in standing-seam Galvalume to underline the economy while the Shou Sugi Ban cedar speaks to the owner's Japanese heritage. The form follows a simplified roof type, similar to the barns found in the area.

**OWNER/CLIENT:** HARRISON SUTCLIFFE

**PROJECT TEAM:** TIM MADDOX, AIA; SETH SPRADLIN, ASSOC. AIA;

JOSH DANISH, AIA

**CONSULTANTS:** SMITH ENGINEERING CO., CHRIS CRIDER CONSTRUCTION

**PHOTOGRAPHER:** TIMOTHY HURSLEY

## E. FAY JONES GOLD MEDAL AWARD



### Joe Stanley, AIA

FOUNDING PRINCIPAL, POLK STANLEY WILCOX ARCHITECTS

A 46-year veteran of the design and construction industry, Joe Stanley is the founding principal of Polk Stanley Wilcox Architects, the second-largest architectural firm in Arkansas. Stanley has managed the design and construction administration of more than 600 commissions of a wide variety of building types and program complexities in Arkansas, Tennessee and Oklahoma. Projects completed under his direction total more than one billion in terms of dollar value and in square footage. Under his leadership, the firm has been widely recognized for design excellence, garnering more than 100 local, state, regional and national awards.

Stanley has been personally recognized within the construction industry and public communities statewide for his passion and commitment to Arkansas. He has been inducted into the Arkansas Construction Hall of Fame and

presented with a Career Distinguished Service Award by the University of Arkansas Fay Jones School of Architecture & Design. An important focus for him is his involvement in studioMAIN, an all-volunteer organization of design professionals aiming to create a higher-quality built environment in central Arkansas. As a founding board member, he has been heavily involved in the organization since 2012.

A native of Augusta, Stanley absorbed his father's philosophy of "under promise and over deliver" – a mantra that has stayed with him since he left the farm in 1964. He and his wife Becky have been married for almost 50 years. Their daughter Laura Stanley Bunn is also a licensed architect in Arkansas.





## MERIT AWARD

## PEOPLE'S CHOICE AWARD



**PROJECT:** PASCHAL HEAT AIR & GEOTHERMAL | **FIRM:** DEMX ARCHITECTURE  
**CONTRACTOR:** EAST HARDING CONSTRUCTION | **LOCATION:** SPRINGDALE

Paschal needed both a warehouse that could support its expanding inventory and office space that could integrate with its evolving business model. The 30,000-SF warehouse, stretched the length of the narrow site, maximizes the efficiency of inbound and outbound trailers. The department offices are organized in blocks, stacked around an open office that encourages transparency and collaboration.

The exterior reinforces the company's industrial character. Large glass overhead doors allow the open office space to be expanded further, reflecting the company's focus on efficiency and providing a strong figure for a growing company.

**OWNER/CLIENT:** CHARLEY BOYCE | **PROJECT TEAM:** TIM MADDOX, AIA; SETH SPRADLIN, ASSOC. AIA; JULIE CHAMBERS, AIA; JOSH DANISH, AIA; LEANA FISCHER, ASSOC. AIA; BEN CRUCE, ASSOC. AIA | **CONSULTANTS:** ENGINEERING ELEMENTS, ENGINEERING CONSULTANTS INC., BATES & ASSOCIATES CIVIL ENGINEERING & LAND SURVEYING | **PHOTOGRAPHER:** TIMOTHY HURSLEY



## MERIT AWARDS



**PROJECT:** AMY SANDERS LIBRARY | **FIRM:** TAGGART ARCHITECTS  
**CONTRACTOR:** FLYNCO | **LOCATION:** SHERWOOD

The site for this 14,500-SF building is a heavily wooded 15-acre parcel with a steep slope falling off from the street. The design team, along with the city of Sherwood, decided to take the approach of setting the building within the existing trees and steep terrain rather than the more typical approach of clearing the trees and leveling the ground. Taking advantage of the natural topography to string the public functions along a ridge, facilitating easy entry from parking into the building without stairs or ramps, the team capitalized on the steep terrain at the rear by projecting the reading room elevated on columns out into the woods, giving the impression that one is in a treehouse. Designs for this site's future include a small exterior amphitheater that takes advantage of the natural site slope and hiking paths throughout the wooded site.

**OWNER/CLIENT:** CENTRAL ARKANSAS LIBRARY SYSTEM  
**PROJECT TEAM:** STEVE GRISHAM, AIA; ALAN NEW, AIA; JAMES BAKANOVIC, AIA  
**CONSULTANTS:** TME, ROBBINS ENGINEERING, THOMAS ENGINEERING, LANDSCAPE ARCHITECTURE INC., JULIE GRISHAM INTERIORS  
**PHOTOGRAPHER:** KEN WEST



**PROJECT:** CHURCH+CENTER | **FIRM:** MODUS STUDIO  
**CONTRACTOR:** MICHAEL AMES | **LOCATION:** FAYETTEVILLE

From the old bones of a local electric co-op, the 15 Church and 200 Center buildings have been transformed into a series of sustainable office, retail and living space. Remaining true to its industrial heritage, the interior is clean and flexible with exposed structure. Skylights and steel window apertures amplify the exterior connection, eliminating the need for artificial lighting on most days.

**OWNER/CLIENT:** 15 CHURCH PARTNERS LLC | **PROJECT TEAM:** CHRIS BARIBEAU, AIA; JOSH SIEBERT, ASSOC. AIA; JASON WRIGHT, ASSOC. AIA; AUSTIN CHATELAIN, AIA; AARON SPEAKS, AIA; SUZANA ANNABLE, AIA; JOSHUA JEWETT, AIA; MATT POE, AIA; JODY VERSER, ASSOC. AIA; SCOTT PENMAN; PAUL SIEBENTHAL; ALEX COGBILL; CORY MEYER; JEREMY HUDSON; COREY RUNNELLS; CHRIS LANKFORD; DAVID MCELYEA; GRAHAM PATTERSON; LANCE MALLETT; KEVIN BROWN; CESAR CHACON | **CONSULTANTS:** HP ENGINEERING, INTEGRITY SOLUTIONS GROUP, ENTEGITY  
**PHOTOGRAPHER:** TIMOTHY HURSLEY





## MERIT AWARDS



**PROJECT:** HILLSIDE ROCK | **FIRM:** SILO AR+D  
**CONTRACTOR:** SILO AR+D | **LOCATION:** FAYETTEVILLE

Like a mineral, the architecture of the Hillside Rock emerges from interactions with its environment, without attempting to recede into nature. Use of simple corrugated metal on all sides emphasizes the house as a solid mass embedded in the sloping three-quarter acre site. Instead of scattering small windows indifferently on all sides, the façade's punctures are choreographed to create more singular connections to the land at different scales. The interior's split-level organization is tuned to the hillside slope, while a central wooden stair stitches together a spatial section that transitions from a concrete base into white carved volumes whose scale mimics their immediate exterior surroundings.

**OWNER/CLIENT:** EMILIE AND FRANK JACOBUS | **PROJECT TEAM:** FRANK JACOBUS, AIA; MARC MANACK, AIA; SHANE MALONEY; CESAR CHACON  
**CONSULTANTS:** GORE ENGINEERING, BATES ENGINEERING, SCHWARTZ STONE, WHITE RIVER NURSERY | **PHOTOGRAPHER:** TIMOTHY HURSLEY



**PROJECT:** MAIN x MDRN | **FIRM:** MODUS STUDIO  
**CONTRACTOR:** OELKE CONSTRUCTION | **LOCATION:** BENTONVILLE

The form of the four-story MAIN x MDRN project separates, like the lens of a camera, to embody another aperture in the client's tool belt as the building now becomes a reflection of the firm's daily process. These two crisp brick masses are connected by an expansive glass volume that creates entries, street connections, balconies, and views of the historic downtown. Balconies are carefully carved from the building's taut forms, and corners are cut away to reveal expressive cantilevers. The modern yet raw interiors allow the rigid steel structure to stand proud over flexible and open spaces while concrete walls and countertops provide texture and character. Wood screens are implemented to provide privacy and warmth. MAIN x MDRN is a rejuvenated model of city building, setting a standard for urban development that encompasses specific work space with speculative office options all crafted in a timeless palette and with classic form-making.

**OWNER/CLIENT:** ADAIR CREATIVE | **PROJECT TEAM:** CHRIS BARIBEAU, AIA; JOSH SIEBERT, ASSOC. AIA; MATT POE, AIA; DAVID MCELYEA  
**CONSULTANTS:** MORRISON-SHIPLEY ENGINEERS, MILLER ENGINEERING, MCROREY ENGINEERING | **PHOTOGRAPHER:** TIMOTHY HURSLEY



**PROJECT:** MOUNTAINTOP RESIDENCE  
**FIRM:** FENNEL PURIFOY ARCHITECTS  
**CONTRACTOR:** FRED LORD BUILDER | **LOCATION:** PULASKI COUNTY

The Mountaintop Residence nests atop the Ouachita Mountains in a remote forest. Its seclusion among the treetops offers dramatic and expansive views after rising above the canopy. Capturing these views by organizing the program vertically and utilizing large windows was a primary objective for design. The owner, an avid climber, requested that the house feel like it was nestled among tree branches. Exposed glu-laminated structure and light-filled space in the upper levels of the home mimic moving up through the branches of a tree. This concept playfully appears throughout the residence with climbing ropes installed for the owners' use to use between levels and even in the master bedroom, where the bed is suspended from climbing ropes. The exterior is clad in a zinc rain-screen which subtly changes color with the sunlight. The highest point of the house is the "Crow's Nest," offering panoramic views of the Ouachita Mountains.

**PROJECT TEAM:** PHIL PURIFOY, AIA; TOM FENNEL, AIA; BEN HARTTER, AIA  
**CONSULTANT:** GRANT JORDAN | **PHOTOGRAPHER:** JACOB SLATON





## MERIT AWARDS



**PROJECT:** TWO RIVERS POINT | **FIRM:** POLK STANLEY WILCOX ARCHITECTS  
**CONTRACTOR:** WESLEY WALLS, AIA | **LOCATION:** LITTLE ROCK

Stretching above the tree line, this multi-level home for the architect and his family of four realizes a lifelong obsession with owning a treehouse. This collection of wood and steel, glass and sky afforded an opportunity to embody much of what's sacred about those forts in the air: the simplicity of its form, the security of a perch and the anticipation of a view. Negotiating an extremely steep site with panoramic views of the Arkansas River and Two Rivers Park, the house was realized as a narrow 22-foot wide bar, anchored by stone into the hillside and supported by piloti. The stone wall serves as both a visual anchor and a physical barrier between the public entry and private living spaces. The material palette was limited to stone, steel and glass.

The idealized treehouse is not trendy. It is simple, even timeless. It is restrained in form, finish and function, while providing an outsized sense of discovery and delight.

**OWNER/CLIENT:** WESLEY WALLS, AIA | **PROJECT TEAM:** WESLEY WALLS, AIA  
**CONSULTANTS:** ENGINEERING CONSULTANTS INC.  
**PHOTOGRAPHERS:** TIMOTHY HURSLEY & NANCY NOLAN



**PROJECT:** UPTOWN APARTMENTS + SHOPS | **FIRM:** MODUS STUDIO  
**CONTRACTOR:** GOLDEN CONSTRUCTION | **LOCATION:** FAYETTEVILLE

This mixed-use project creates a decisively new living model by crafting a series of concise urban spaces that creates a "pop-up" neighborhood within the 15-acre site. In contrast to the cheaply constructed typological norms, Uptown Apartments + Shops elevates the architecture of the garden apartment model to create an anchor at the scale of the district and the city. The neighborhood plan here leverages the Razorback Greenway to create a street promenade that rewards pedestrian and bicycle use. The striking composition of material, form and color makes this project a defining place, proving that our car-driven society can evolve into a hedonistic balance within our Southern culture.

**OWNER/CLIENT:** SPECIALIZED REAL ESTATE GROUP  
**PROJECT TEAM:** CHRIS BARIBEAU, AIA; CORY AMOS, AIA; MICHAEL POPE, AIA; MATT POE, AIA; HANNAH BRESHEARS; CORY MEYER; DAVID MCELYEA  
**CONSULTANTS:** ECOLOGICAL DESIGN GROUP, JORGENSEN & ASSOCIATES, RLG CONSULTING ENGINEERS, HP ENGINEERING, ENTEGRITY, DK DESIGN, 709 DESIGN, CRAIG COLORUSSO | **PHOTOGRAPHER:** TIMOTHY HURSLEY

## CITATION AWARD



**PROJECT:** FREEMAN PERFORMING ARTS CENTER | **FIRM:** UNIVERSITY OF ARKANSAS COMMUNITY DESIGN CENTER | **LOCATION:** FREEMAN, SOUTH DAKOTA | **PROJECT TEAM:** STEPHEN LUONI, ASSOC. AIA; JEFF HAZARD, AIA; STACEY MCMAHAN, AIA; JESSICA HESTER, AIA; JONATHAN MARTINEZ, ASSOC. AIA; RAHEEL AHMAD, ASSOC. AIA; DR. FRANCISCO MEJIAS VILLATORO; DAVID MARROQUIN JUAREZ; MARANDA GERGA, INTERN; LINDA KOMLOS, ADMINISTRATIVE ANALYST

The Freeman Performing Arts Center in South Dakota marks the threshold between prairie and civic life. This small agricultural community of 1,300 has an outsized Anabaptist music tradition recognized nationally. The 37,000-SF building unifies a miscellaneous collection of public buildings and landscapes at the southwest corner of the town's one-mile grid. The center's massing projects an ascending system of familiar gable roofs, which absorb the fly tower into a composition reflective of the region's pragmatic building traditions.





## FINALISTS



**PROJECT:** FLYRITE

**FIRM:** MARLON BLACKWELL ARCHITECTS

**CONTRACTOR:** FRANKLIN ALAN

**LOCATION:** AUSTIN, TEXAS

Flyrite is a new, locally rooted fast-food restaurant in Austin, Texas, with a focus on using no artificial ingredients in their signature sandwiches and dishes. The recently completed Burnet location is the first of a prototypical drive-thru and dine-in building. Simple materials are employed with elegant details to give the building a crafted and refined feel that reinforces the brand's aesthetic.

**OWNER/CLIENT:** FLYRITE CHICKEN

**PHOTOGRAPHER:** PAUL BARDAGJY



**PROJECT:** SKYLIGHT CINEMA

**FIRM:** POLK STANLEY WILCOX ARCHITECTS

**CONTRACTOR:** FLINTCO

**LOCATION:** BENTONVILLE

Skylight Cinema is an innovative entertainment experience just south of the downtown Bentonville Square. Utilizing architectural cast-in-place concrete and copper rainscreen panels as the primary building elements, the building reflects the crisp, high level of service and technology experienced inside the theater.

**OWNER/CLIENT:** ROPESWING HOSPITALITY GROUP

**PHOTOGRAPHER:** KEN WEST



**PROJECT:** THE ICONIC AND THE EVERYDAY: CREATIVE FINLAND IN AMERICA

**FIRM:** JONATHAN BOELKINS ARCHITECT

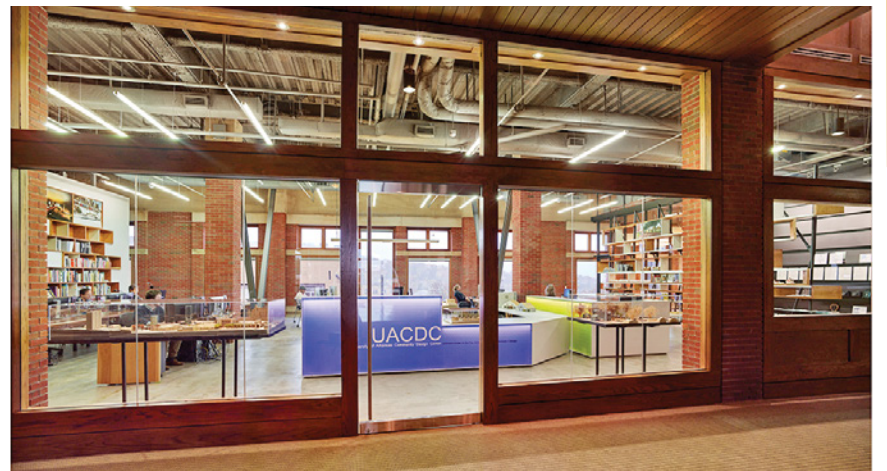
**CONTRACTOR:** STRONGHOLD WOODWORKS

**LOCATION:** EMBASSY OF FINLAND - WASHINGTON, D.C.

The Iconic and The Everyday exhibition proposes an explicit condensed assertion of the contemporary presence and influence of Finnish design, industry and identity in the United States.

**OWNER/CLIENT:** SUOMI FINLAND 100

**PHOTOGRAPHER:** AARON KIMBERLIN



**PROJECT NAME:** UNIVERSITY OF ARKANSAS COMMUNITY DESIGN CENTER STUDIO

**FIRM:** UNIVERSITY OF ARKANSAS COMMUNITY DESIGN CENTER

**CONTRACTOR:** FLINTCO

**LOCATION:** FAYETTEVILLE

The 3,100-SF tenant renovation for a design studio repurposes space in an atrium building. Renovations removed a warren of offices that covered large-scale windows, introducing two sculptural walls that animate the main studio in a saddlebag plan. The masonry building is complemented by an economy of lightweight interventions that promote visual porosity and a horizontally-organized work environment.

**OWNER/CLIENT:** UNIVERSITY OF ARKANSAS

**PHOTOGRAPHERS:** TIMOTHY HURSLEY, UNIVERSITY OF ARKANSAS COMMUNITY DESIGN CENTER



# DICK SAVAGE AWARD



## Thad R. Kelly III, AIA

Thad Kelly is principal of StudioFive Architecture Landscape Interior LLC in Fayetteville, specializing in commercial, industrial, retail and residential projects. Kelly is also principal of Master Builder Architects LLC, a general contracting firm offering architect-led design-build services.

Kelly has been active with the AIA since the early 1980s. He has served on the state board (2002-2009), as president of AIA Arkansas (2008), chaired the state's annual convention (2005) and served as AIA's secretary. Kelly also chaired the Gulf States region's design awards jury (2010 and 2011), was on the Professional Advisory Board of the UA Interior Design Program (2000-2010) and the Professional Advisory Board of the Fay Jones School of Architecture (2007-2011). He was instrumental in helping the interior

design program move from the division of agriculture to the school of architecture. Kelly served as the Gulf States Regional Representative on the AIA National Board of Directors (2012-2014.)

While serving on AIA Arkansas' board, Kelly became a champion for newly licensed architects, starting the MileStone recognition program. This program has now been adopted and adapted nationwide.

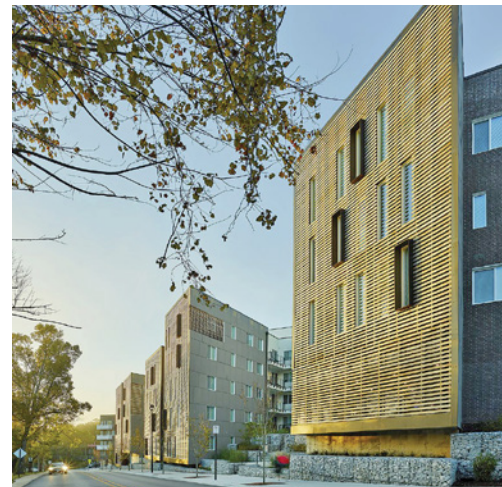
Thad has been active in the Fayetteville community, as a member of Rotary Club of Fayetteville, Fayetteville Chamber of Commerce and his church, St. Paul's Episcopal.



## REMAINING PROJECTS



**PROJECT:** ACDI HEADQUARTERS  
**FIRM:** BLACK CORLEY OWENS & HUGHES PA  
**CONTRACTOR:** HARCO CONSTRUCTORS  
**LOCATION:** BENTON



**PROJECT:** ARKANSAS  
 BEAR CLAW  
**FIRM:** MODUS STUDIO  
**CONTRACTOR:** TRINITAS  
 CONSTRUCTION  
**LOCATION:** FAYETTEVILLE



**PROJECT:** ARKANSAS CHILDREN'S SOUTHWEST LITTLE ROCK COMMUNITY CLINIC  
**FIRM:** POLK STANLEY WILCOX ARCHITECTS  
**CONTRACTOR:** NABHOLZ  
**LOCATION:** LITTLE ROCK



**PROJECT:** ARKANSAS  
 DEMOCRAT RENOVATION  
**FIRM:** CROMWELL ARCHITECTS  
 ENGINEERS  
**CONTRACTOR:** CENTRAL  
 CONSTRUCTION  
**LOCATION:** LITTLE ROCK





## REMAINING PROJECTS



**PROJECT:** ARKANSAS OUTPATIENT SURGERY CENTER  
**FIRM:** CROMWELL ARCHITECTS ENGINEERS  
**CONTRACTOR:** KINCO INC.  
**LOCATION:** NORTH LITTLE ROCK



**PROJECT:** ATA INTERNATIONAL INC. WORLD HEADQUARTERS  
**FIRM:** WITTENBERG DELONY & DAVIDSON INC. ARCHITECTS  
**CONTRACTOR:** NABHOLZ  
**LOCATION:** LITTLE ROCK



**PROJECT:** BOYS & GIRLS CLUBS OF SALINE COUNTY  
**FIRM:** BLACK CORLEY OWENS & HUGHES PA  
**CONTRACTOR:** CDI CONTRACTORS  
**LOCATION:** BENTON



**PROJECT:** CARROLL ELECTRIC CORPORATE HEADQUARTERS  
**FIRM:** KSA ARCHITECTURE  
**CONTRACTOR:** NABHOLZ  
**LOCATION:** BERRYVILLE



**PROJECT:** COLLEGE AND CENTER  
**FIRM:** MARLON BLACKWELL ARCHITECTS  
**CONTRACTOR:** SSI INC.  
**LOCATION:** FAYETTEVILLE



**PROJECT:** CONWAY BLOCK PLANT  
**FIRM:** AMR ARCHITECTS  
**LOCATION:** CONWAY



**PROJECT:** DEE BROWN LIBRARY - MAKER'S SPACE ADDITION  
**FIRM:** FENNELL PURIFOY ARCHITECTS  
**CONTRACTOR:** FLYNCO INC.  
**LOCATION:** LITTLE ROCK



**PROJECT:** ELKINS HIGH SCHOOL  
**FIRM:** HIGHT JACKSON ASSOCIATES  
**CONTRACTOR:** MILESTONE CONSTRUCTION CO.  
**LOCATION:** ELKINS





## REMAINING PROJECTS



**PROJECT:** FARMERS EXCHANGE BUILDING  
**FIRM:** HARRISON FRENCH & ASSOCIATES  
**CONTRACTOR:** SELLERS PROPERTIES INC.  
**LOCATION:** BENTONVILLE



**PROJECT:** FIAMMA 1873 RISTORANTE  
**FIRM:** DEMX ARCHITECTURE  
**CONTRACTOR:** ROBERT DODD  
**LOCATION:** BENTONVILLE



**PROJECT:** FLIPPIN ELEMENTARY SCHOOL  
**FIRM:** MODUS STUDIO  
**CONTRACTOR:** C.R. CRAWFORD CONSTRUCTION  
**LOCATION:** FLIPPIN



**PROJECT:** HAAS HALL ACADEMY  
**FIRM:** JKJ ARCHITECTS  
**CONTRACTOR:** CROSSLAND CONSTRUCTION  
**LOCATION:** ROGERS



**PROJECT:** FAYETTEVILLE SOLID WASTE + RECYCLING ADMINISTRATIVE OFFICES  
**FIRM:** DEMX ARCHITECTURE  
**CONTRACTOR:** BENCHMARK CONSTRUCTION  
**LOCATION:** FAYETTEVILLE



**PROJECT:** FIRST WESTERN BANK  
**FIRM:** JKJ ARCHITECTS  
**CONTRACTOR:** MILESTONE CONSTRUCTION CO.  
**LOCATION:** BENTONVILLE



**PROJECT:** FORT SMITH WATERFRONT RV PARK  
**FIRM:** UNIVERSITY OF ARKANSAS COMMUNITY DESIGN CENTER  
**LOCATION:** FORT SMITH



**PROJECT:** KMS OFFICE REMODEL  
**FIRM:** BLACK CORLEY OWENS & HUGHES PA  
**CONTRACTOR:** HARCO CONSTRUCTORS  
**LOCATION:** LITTLE ROCK





## REMAINING PROJECTS



**PROJECT:** LANDERS FAMILY CABIN  
**FIRM:** BLACK CORLEY OWENS & HUGHES PA  
**CONTRACTOR:** ITR CONSTRUCTION  
**LOCATION:** PARON



**PROJECT:** LITTLE ROCK TECHNOLOGY PARK  
**FIRM:** WITTENBERG DELONY & DAVIDSON INC. ARCHITECTS  
**CONTRACTOR:** EAST HARDING CONSTRUCTION  
**LOCATION:** LITTLE ROCK



**PROJECT:** MACARTHUR COMMONS  
**FIRM:** AMR ARCHITECTS  
**CONTRACTOR:** CENTRAL CONSTRUCTION  
**LOCATION:** LITTLE ROCK



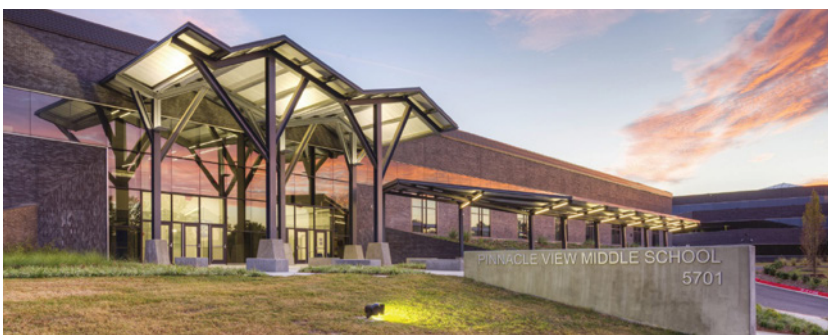
**PROJECT:** THE NEW SCHOOL  
**FIRM:** HIGHT JACKSON ASSOCIATES  
**CONTRACTOR:** NABHOLZ  
**LOCATION:** FAYETTEVILLE



**PROJECT:** ORTHOARKANSAS  
**FIRM:** CROMWELL ARCHITECTS ENGINEERS  
**CONTRACTOR:** KINCO INC.  
**LOCATION:** LITTLE ROCK



**PROJECT:** PANEK RESIDENCE  
**FIRM:** BRYA ARCHITECTURE INC.  
**CONTRACTOR:** INSITE CONSTRUCTION INC.  
**LOCATION:** JOHNSON



**PROJECT:** PINNACLE VIEW MIDDLE SCHOOL  
**FIRM:** WER ARCHITECTS/PLANNERS  
**CONTRACTOR:** BALDWIN & SHELL CONSTRUCTION CO.  
**LOCATION:** LITTLE ROCK



**PROJECT:** RAYONIER CORPORATE HEADQUARTERS  
**FIRM:** POLK STANLEY WILCOX ARCHITECTS  
**CONTRACTOR:** DANIS  
**LOCATION:** WILDLIGHT, FLORIDA





## REMAINING PROJECTS



**PROJECT:** RICHESIN RESIDENCE  
**FIRM:** YEARY LINDSEY ARCHITECTS  
**CONTRACTOR:** WAYNE MOORE  
**LOCATION:** LITTLE ROCK



**PROJECT:** TOURMALINE URBAN LOFTS  
**FIRM:** CAITLIN KELLEY ARCHITECT  
**CONTRACTOR:** BAUMANN & CROSNO CONSTRUCTION  
**LOCATION:** BENTONVILLE



**PROJECT:** UA COMMUNITY COLLEGE - WORKFORCE TRAINING CENTER  
**FIRM:** MAHG ARCHITECTURE  
**CONTRACTOR:** NABHOLZ  
**LOCATION:** MORRILTON



**PROJECT:** WARRIOR TRADITION - NATIONAL NATIVE AMERICAN VETERANS MEMORIAL  
**FIRM:** HARRISON FRENCH & ASSOCIATES  
**LOCATION:** WASHINGTON, D.C.



**PROJECT:** SEARCY PHYSICAL THERAPY  
**FIRM:** AMR ARCHITECTS  
**LOCATION:** SEARCY



**PROJECT:** TYSON CENTER FOR AGRICULTURAL SCIENCES  
**FIRM:** WER ARCHITECTS/PLANNERS  
**CONTRACTOR:** NABHOLZ  
**LOCATION:** FAYETTEVILLE



**PROJECT:** WACO TITLE COMPANY  
**FIRM:** HIGHT JACKSON ASSOCIATES  
**CONTRACTOR:** COMMERCE CONSTRUCTION COMPANY  
**LOCATION:** SPRINGDALE



## EMERGING PROFESSIONAL



### Lori Yazwinski Santa-Rita, AIA, LEED AP, NCARB

PARTNER, JENNINGS + SANTA-RITA ARCHITECTS

Lori Yazwinski Santa-Rita is a partner at Jennings + Santa-Rita Architects in Fayetteville. She is currently serving as vice president for the Arkansas AIA and is a founding member of Women in Architecture Arkansas.

After graduating magna cum laude from the University of Arkansas in 2005, Santa-Rita was appointed to the city of Fayetteville's Environmental Action Committee. She has also been involved with various nonprofits in Northwest Arkansas. Her role as a mother and business owner drives her to serve her community.

Santa-Rita's dedication to the profession of architecture and her work with the Gulf States Emerging Professionals Symposium was recognized in 2017 with an AIA Component Excellence Award. She was also included in the Northwest Arkansas Business Journal's 40 Under 40 Class of 2015. She will be featured in an upcoming publication of Women Makers in Arkansas.

## AWARD OF MERIT



### Ted and Leslie Belden

Ted and Leslie Belden met on a trip to Italy with what is now known as the Fay Jones School of Architecture & Design at the University of Arkansas. They married one year after both graduated. Leslie is a life-long Arkansan while Ted, born in Minnesota, has been a resident of Arkansas since 1974.

The Beldens split their time between central and Northwest Arkansas. Ted is the chairman of Lomanco Inc., his family's business located in Jacksonville. Leslie serves the Presbytery of Arkansas as its temporary stated clerk. Their primary residence is in Fayetteville, where they are partners in Old Buildings Inc.

Through Old Buildings, the Beldens have invested in the revitalization of downtown Fayetteville and the renovation of contributing historical structures such as the Inn at Carnall Hall on the UA campus.

Leslie and Ted Belden have served on various boards and commissions, many tied to the fields of architecture and historic preservation, faith-based organizations and in particular, the University of Arkansas at Fayetteville.

## DESIGN AWARDS CHAIR



### BJ Phillips

ARCHITECT | BURRIS ARCHITECTURE, BENTONVILLE

BJ Phillips is a licensed architect with Burris Architecture in Bentonville. He is a 2002 graduate of the Fay Jones School of Architecture & Design at the University of Arkansas. Phillips became licensed in 2008 and is currently licensed in nine states.

In 2015, Phillips served as section chair of the Northwest Arkansas section for the Arkansas AIA and began serving as chair of the section's annual Scholarship Bowling Tournament. He has also volunteered his time with the Fay Jones School, giving students feedback on their portfolios and résumés. Phillips spends his free time with his wife and two young children.



## THE JUDGES



### Sheila Dial Barton, AIA

PRINCIPAL, EOA ARCHITECTS  
NASHVILLE, TENNESSEE

Sheila Dial Barton, AIA, LEED AP is a principal with EOA Architects, a medium-sized design firm in Nashville, Tennessee. Barton began studying interior design at the Art Institute of Atlanta and later studied urban planning at the University of Tennessee. She has been involved with AIA since graduating in 1997.

She served on the AIA Honor Awards Jury in 2001. She sat on the AIA Middle Tennessee board of directors and served as its president in 2009. She was also the director of the Middle Tennessee Young Architects Forum from 2003 to 2005.



### Nick Dryden, AIA

PRINCIPAL, DAAD | NASHVILLE, TENNESSEE

A third-generation architect in Tennessee, Nick Dryden graduated from the University of Tennessee College of Architecture in 1995 and started his career in Nashville to carry forward his family's tradition of passionate design, albeit with a modern twist.

Since establishing DAAD, Dryden and the firm have focused on a diversity of project types including adaptive reuse, residential, commercial, neighborhood master planning and mixed-use development in Nashville and throughout Tennessee, Alabama and Kentucky. Dryden has led projects ranging from a custom dining table to multi-block mixed-use developments in emerging Nashville neighborhoods.



### Kem Hinton, FAIA

FOUNDING PARTNER & PRINCIPAL,  
TUCK-HINTON ARCHITECTS | NASHVILLE, TENNESSEE

Kem Hinton is an architect, LEED accredited professional, urban designer, author, historian, graphic designer, photographer, lecturer and visual artist. He received his professional education from the University of Tennessee, University of Pennsylvania, and Ecole des Beaux-Arts. In 1984, he and Seab Tuck established Tuck-Hinton Architects, where he has been responsible for award-winning projects.

Hinton is currently working on the new \$95-million Tennessee State Library & Archives facility and a new memorial at War Memorial Plaza to honor Tennessee veterans involved in the Gulf War conflicts.



### Ryan Thewes

FOUNDER & PRINCIPAL, RYAN THEWES ARCHITECT  
NASHVILLE, TENNESSEE

Ryan Thewes grew up in southern Indiana and graduated in 2000 from Ball State University with a bachelor's degree in architecture. Shortly after, he had the unique opportunity to apprentice with architects, including Bart Prince of Albuquerque, New Mexico, who were carrying on Frank Lloyd Wright's vision of organic architecture.

Thewes moved to Nashville in 2006 and started Ryan Thewes Architect, a high-design architecture firm specializing in modern and creative projects with an emphasis on energy efficient construction techniques.

ARKANSAS  
CHAPTER of the  
AMERICAN  
INSTITUTE of  
ARCHITECTS  
CONVENTION  
2018 october  
17 - 20  
hot springs, ar

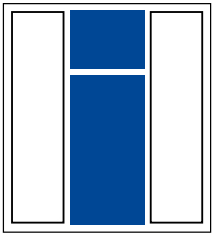


in affiliation with ImageWorks  
Commercial Interiors

aiaar'18







**ImageWorks**  
Commercial Interiors

**Steelcase**  
AUTHORIZED DEALER

**PLATINUM  
PARTNER**



## HEALTHCARE



## CORPORATE



## TECHNOLOGY



## EDUCATION



## ARCHITECTURAL PRODUCTS

Smarter Spaces. Single Source.  
[www.goimageworks.org](http://www.goimageworks.org)